

Hough about this?

YOU'VE made the decision to live near Centennial Park so you can whirl around on your bike before work. And you want to live in a house with classic lines and a contemporary feel, but it must have excellent storage and security parking for two cars. Well, this modern three-storey terrace in Hough Street will suit you down to the ground. There are two entrances: one via the garage on the lowest level, the other via the courtyard on the middle level. Beyond the entrance foyer is a large open-plan living and dining area with parquetry flooring and wide plantation shutters. Adjacent is the kitchen and casual living area, which opens onto an attractive courtyard tricked up with a fountain and pond and planted with camellias, azaleas and star jasmine. Upstairs are two bathrooms and three bedrooms – the main has a walk-in dressing room, ensuite and balcony; the other two have generous built-ins and private balconies. On the lowest level is a rumpus room, laundry and storage room, wine cellar and security garaging. A big bonus here are the three visitor car spaces.

Room for improvement: That rumpus room needs a pool table.

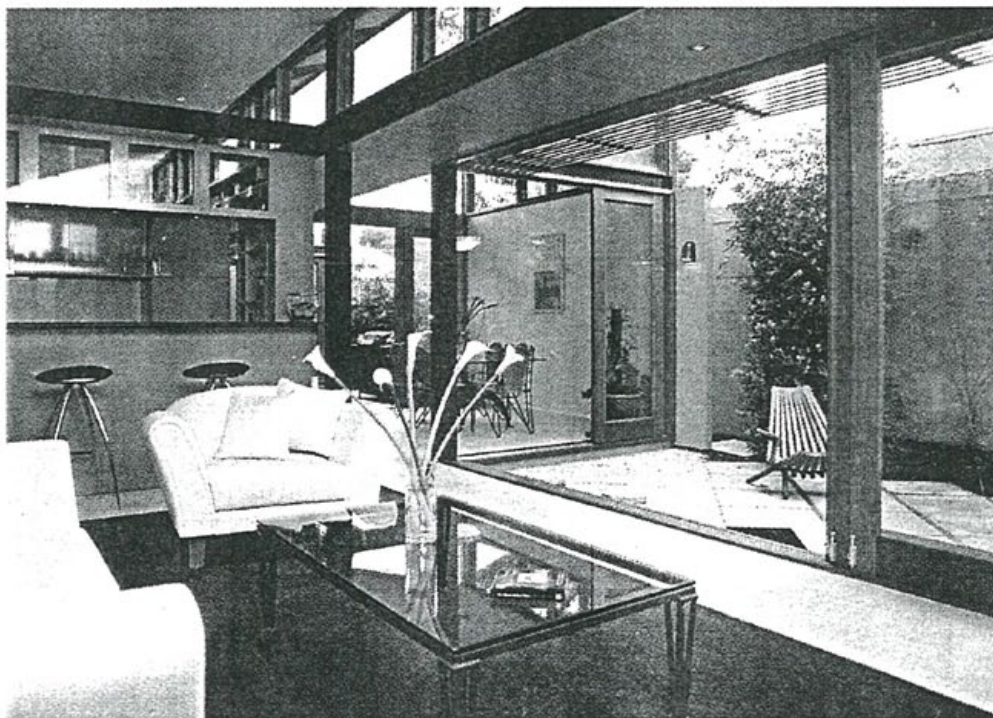


BONDI JUNCTION

More than \$650,000

Address: 3 Hough Street
House: 3 bedrooms, 2 bathrooms, huge rumpus room, parking
Built: 1985
Size: 274 square metres
Inspect: Saturdays and Thursdays noon-12.45pm
Agent: Di Jones Real Estate, ph 9328 7878 or 0414 362 371
Auction: Thursday October 1 at 6.30pm at Sir Stamford Hotel, Double Bay

HOUSE OF THE WEEK



ALEXANDRIA About \$500,000

Address: 37 Garden Street
House: 3 bedrooms, 2 bathrooms, study
Built: Early 1900s, renovated 1997
Land: 320 square metres
Inspect: Thursdays 5.15pm-6pm and Saturdays 12.15pm-1pm
Agent: McGrath Partners, ph 9386 3313 or 0411 385 444
Auction: On site, Saturday October 3 at 4.30pm

Light up your life

WOW, this is a seriously stunning transformation of what was once a fairly humble attached cottage. And it's in a good location, too, not far from leafy Alexandria Park. Don't be fooled by that deceptive facade. The interior is contemporary and the place is enormous. Architect Tone Wheeler is responsible for the quality finishes and innovative techniques, such as the courtyards leading from the living room and separate casual family area. Both courtyards are enclosed by timber partitions, which retract to create a huge entertaining space. On either side of the central entry hallway are two of the bedrooms, plus the main bathroom and separate laundry. In the middle section is the spacious formal living area, and beyond here is the open-plan kitchen and dining area. At the back of the house is the main bedroom with ensuite and dressing room. There is a Jetmaster fireplace in the main living area, and the flooring is either limestone or natural fibre carpet. Well worth a look.
Room for improvement: The front hallway is dark. Think skylights.

