

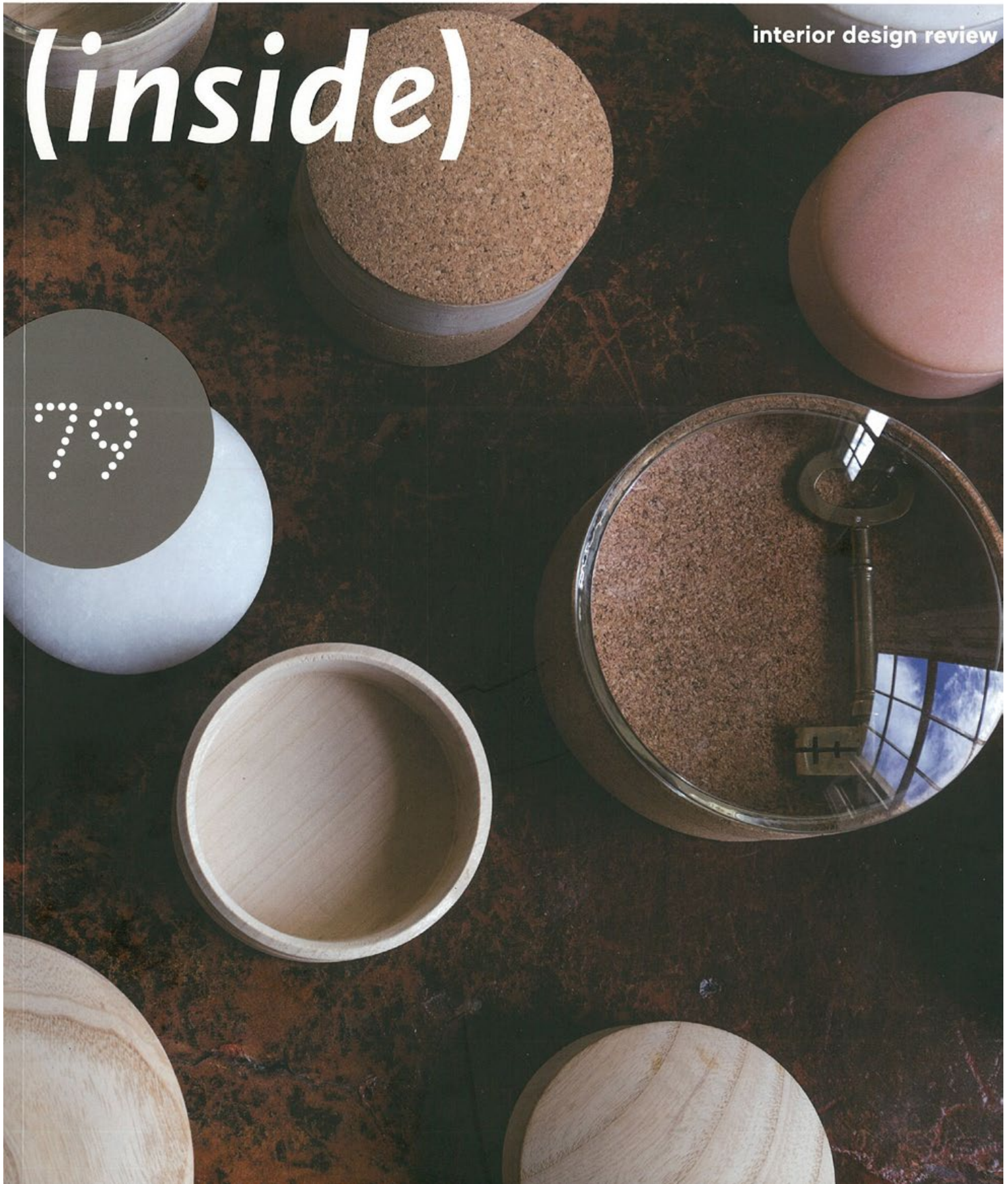
#79 November 2013/February 2014 — projects HASSELL / Landini Associates / Woods Bagot / initiative Desein / Anomaly / profile Ronan & Erwan Bouroullec / Nicholas Gurney / in review Domestic Renewal / Joanna Lamb report Paris Design Week and London Design Festival special coverage IDEA 2013 winners — australiandesignreview.com



9771326-963010-45 \$15.95 AUD

(inside)

interior design review



79

Design team:
Tone Wheeler,
Hilary Whattam,
Jan O'Connor
Photography:
Owen Zhu



Sustainable design principles are inherent in the approach Environa Studio takes to every project. "Long life, loose fit, low impact" is the oft-quoted mantra of Tone Wheeler, Environa Studio's principal. Characteristic of the studio's work, then, is the Wayside Chapel: a functional scheme that will serve the needs of its users well into the future.

Replacing a set of dilapidated buildings, this purpose-built facility, designed pro bono by Environa Studio, provides a new home for a charity providing health, welfare and support for the disadvantaged in the Kings Cross area of Sydney.

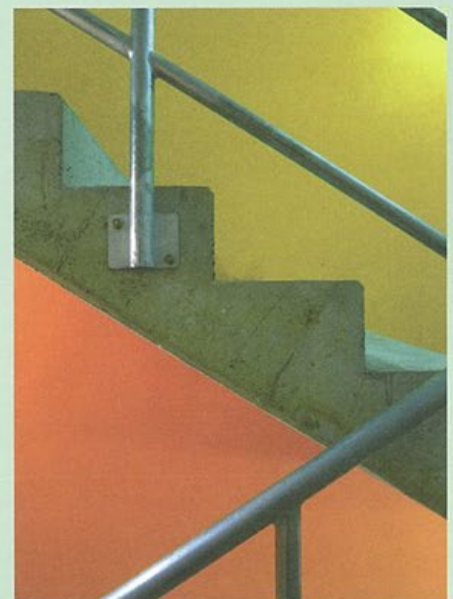
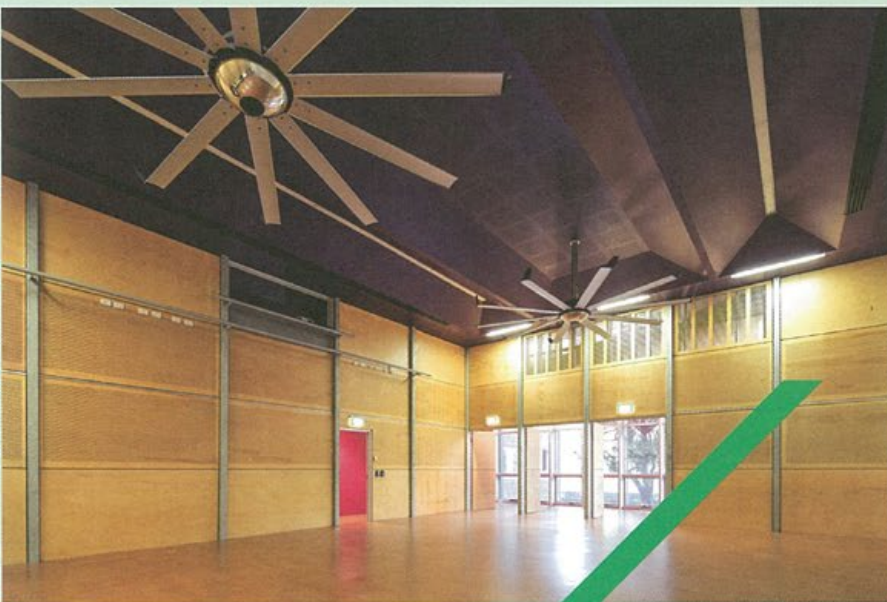
The rebuild has afforded the Wayside Chapel a broader community involvement, providing a centrally located spiritual hub, administration area, community space and rooftop garden, with each floor serving a specific need group.

Efficiency of construction was imperative and, as a result, the building is simple, durable and hard-working. All materials reflect a low-impact ethos, from cork and rubber flooring to recycled concrete gravel and phenolic and reflective insulation. The thermal mass is heated by solar power: solar thermal collectors on the roof collect heat, which is stored in the concrete floors. During the night, roof-mounted fans flush daytime heat with cooler nighttime air, while at all hours, there is passive fresh air ventilation via operable windows, cross-ventilation and ceiling fans. The Chapel also provides free solar-heated showers (with gas boost), while all non-structural elements of the project are designed to be flexible, adaptable and easily repaired or replaced.

Social sustainability is integral to the project, providing a living food program that engages the Chapel's users to grow food on the rooftop garden. The vegetables, herbs and fruit are then cooked on level four before being served in the public cafe.

Text: Gillian Serisier

WINNER



WINNER



Design team:
Tone Wheeler,
Jan O'Connor,
Rory Toomey
Photography:
Owen Zhu

HIGHLY COMMENDED



Striking a balance between youthful charm and mid-century sophistication, this workplace for new media company, The Sound Alliance is a lively yet unpretentious interior.

Much of the existing built fabric has been maintained, with minimal interventions introduced to ensure a loose fit interior. Where new work is introduced – in the reception and the boardroom – low cost and highly functional plywood has been used. Elsewhere, bold colour is used to animate the working zones and the two boardrooms.

Delivering to a small budget and tight time-frame, Environa Studio has used a modest material palette in creative ways to produce a fitout that reflects the client's brand.